



String Monitoring for Commercial-Scale Systems: Maximize Visibility Into String And Module Performance

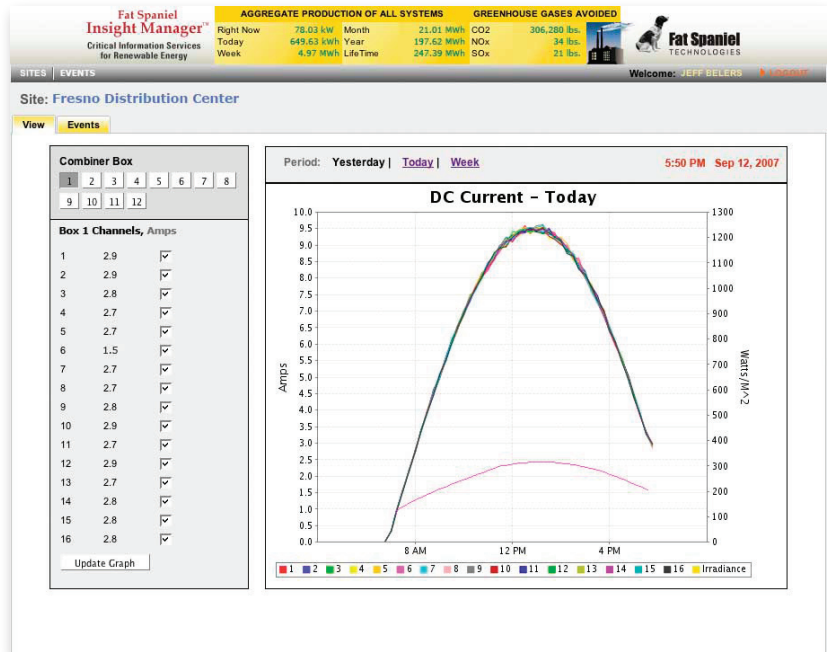
Benefits

- Maximize long term system performance and return on investment
- Remotely monitor individual string performance
- Catch small problems with failed modules or entire strings before they become costly
- Works with "Fat Spaniel Enabled" smart combiner boxes from leading hardware manufacturers
- High quality, off-the-shelf combiner box hardware for long, reliable operation

Features

- SMS and email alerts are automatically sent in the event of string failure
- Web-based display shows comparison of multiple strings' performance to quickly spot module-level problems
- Managed through Fat Spaniel Insight Manager portal (required) for efficient deployment across many sites
- Combiner box configurations of 6 to 24 strings to meet your site-specific needs

Fat Spaniel Technologies, Inc.
 2 West Santa Clara Street
 5th Floor
 San Jose, CA 95113-1824
 Tel: 408.279.5262
 Fax: 408.516.9111
 www.fatspaniel.com
 sales@fatspaniel.com



Specific string performance problems can be immediately identified via the Insight Manager™ String view.

Large solar electric systems can contain thousands of modules, grouped into hundreds of strings. As a commercial system installer or PPA service provider, it's in your interest to ensure each of those modules is functioning properly for maximum output and maximum customer satisfaction. But, failures in individual solar modules and even entire strings can go unnoticed for long periods of time, driving down system output and cutting into profitability. How can you identify faulty strings efficiently and cost effectively?

DC String Monitoring with Smart Combiner Boxes

Fat Spaniel's String Monitoring Service can provide continuous visibility into the health of your solar strings. Fat Spaniel works with selected combiner box manufacturers to "Fat Spaniel Enable" their products through the addition of highly reliable, off-the-shelf monitoring hardware. These smart combiner boxes are configured to communicate with the Fat Spaniel monitoring system and allow string performance to be remotely monitored through the Insight Manager multi-site management portal – which provides the ability to see string performance via a Web view as well as receive automatic alerts.